

# Wildcat Canter



January 2013

UK Ag Equine Programs  
Student Newsletter

## Who's interested in \$\$\$\$ for college???



The College of Agriculture offers a vast number of scholarships each year to new and continuing students in all of our academic programs.

Upper class and transfer student scholarships are awarded on the basis of the student's overall grade point average, writing ability and leadership potential. The scholarship application gives a good overview of each applicant's development in those areas.

Eligible applicants must be a full-time student in a major in the College of Agriculture and maintaining a 2.6 GPA at the end of each spring semester that you are applying. Unless otherwise noted, all College scholarships are only for one academic year. Students must reapply each year to be eligible for additional awards.

The 2013-2014 College of Agriculture Scholarship Application for continuing/transfer students will be available on our college website after Feb. 1. The deadline to apply is April 1 and students will be notified of any awards in early June. (<http://www2.ca.uky.edu/academics/upper>).

If you have any questions about the scholarship program, please contact me at [lisa.cox@uky.edu](mailto:lisa.cox@uky.edu) or 859.257.3469.

*Lisa Slone Cox*  
*Scholarship Program Coordinator*



### In this issue:

- Kristen Wilson named UK Equine Academic Program Coordinator
- Alexandra Harper rejoins UK Ag Equine Programs
- Kentucky Equine Survey releases initial findings
- Clubs & Teams updates
- Congratulations December grads!
- UK Ag faculty receive Great Teacher Awards

# News and Announcements

## Kristen Wilson named UK Equine Academic Program Coordinator

Kristen Wilson has been named academic coordinator within the University of Kentucky Equine Science and Management undergraduate degree program, a component of UK Ag Equine Programs.

She was previously with the University of Maryland as an extension horse specialist, where she worked with the 4-H Horse Program and taught in the university's two-year equine business management program. Wilson earned her Bachelor of Science in animal science, equine option, and Master of Science in extension education, both from the University of Florida.

"I have always loved Kentucky, especially the Lexington area. I have had the opportunity to travel to the area over a dozen times in the past eight years and each time I always thought to myself how nice it would be to live here," said Wilson in response to what made her choose UK. "Horses are my passion, and to be able to live in such a beautiful area and have a career that allows me to be part of the equine industry is such a wonderful opportunity.

"Also, being raised in Florida, my husband and I are eager to get back to the South to be closer to family and to enjoy the slower pace of living," she said.

"Kristen brings a different perspective of the industry and background in education at a college level. She has a strong horse background and a lot of experience in the diverse areas we deal with. She is an excellent addition to our team," said Bob Coleman, associate director for undergraduate education in equine science and management and extension horse specialist at UK.

"I am very excited to be part of the UK Equine Program," Wilson said. "My main goals for my first year are to, one, take time to learn more about the program, students, faculty and the equine industry in Kentucky, and two, to look at the current needs of the program and work with the equine faculty/staff to develop a plan of action for the future of the program."

In her role, Wilson will work closely with faculty within the Equine Science and Management degree program to coordinate undergraduate programs. She will advise incoming program freshman and will also serve as the primary initial advising contact throughout the academic year.

She will also be responsible for program monitoring, including tracking enrollment and demographic data, and for working with faculty on assessment of student learning.

Wilson was born in Annapolis, Md., but grew up in Palm City, Fla., where she was first introduced to horses. She has been involved with horses for 20 years and grew up riding hunter/jumpers and dressage disciplines.



"My first horse of my own was an off the track Thoroughbred named Distant Signal. My grandfather introduced me to the Tennessee Walking Horse breed as a teenager and I started out riding and showing his horses. I then worked for four years during college for Hard Rock Farm in Williston, Fla., assisting in training Tennessee Walking Horses for national level showing," Wilson said.

Wilson said she has continued to show flat shod Tennessee Walking Horses, including her multi-national champion mare, The Midnight Ride, on the national show circuit. In 2012, they received multiple national high point awards as well as recently received the Touch of Class award from the Maryland Horse Industry

Board in January 2013. In addition, Wilson was named 2012 Reserve Champion in the Amateur Flat Shod division for the Walking Horse Owner's Association.

Contact info: [kristen.wilson1@uky.edu](mailto:kristen.wilson1@uky.edu); 859-257-2226

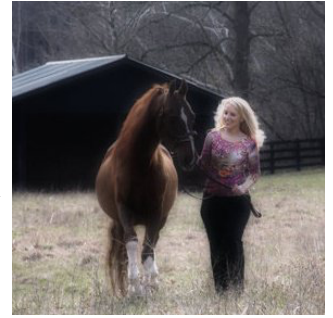
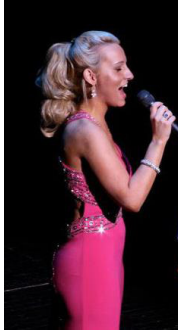
*By Holly Wiemers*



## Alexandra Harper rejoins UK Ag Equine Programs

Hi, I'm Alexandra Harper and I am the new Operations and Communications Coordinator for UK Ag Equine Programs. I graduated from UK in 2010 with a Bachelor of Arts in communication and a minor in both vocal and viola performance. I am currently working on my Masters of Business Administration and will graduate in May.

Some of my hobbies include singing and performing with the Lexington singers, as well as riding and competing with my horses. My American Saddlebred five-gaited horse, Stylin', and I train with Clouse Stables in Versailles, Ky. and compete around the United States. I also still have my very first horse at home, a retired 31 year-old Saddlebred named Intrepid G.S.M. Traveling and spending time with my family and friends is also extremely important to me.



Some of my past experiences involve working for the United States Equestrian Federation and the Fayette County Commonwealth Attorney. I was also an intern for the Ag Equine Programs, formerly Equine Initiative, during my time as an undergraduate at UK, where I was involved with the 10th International Symposium on Equine Reproduction and the World Equestrian Games. I have also had the pleasure of performing at Carnegie Hall in New York City and the Kennedy Center in Washington, DC with the UK Symphony Orchestra as well as in Paris, France, with the

UK Chorale.

I am very excited to be rejoining the equine department here at UK and looking forward to working with everyone.

---

## UK Ag faculty receive Great Teacher Awards

Two University of Kentucky College of Agriculture professors are among six UK faculty members who were recently named recipients of the UK Alumni Association 2013 Great Teacher Award. The recipients are:

- Karen Badger, associate professor, College of Social Work
- **Roberta Dwyer, professor, College of Agriculture**
- Samuel Franklin, assistant professor, College of Medicine
- **John Grove, professor, College of Agriculture**
- Armando Prats, professor, College of Arts & Sciences
- Gerald Smith, associate professor, College of Arts & Sciences

The recipients will be honored at the UK Alumni Association Great Teacher Award Recognition Dinner on Feb. 5, 2013. They will then be honored on center court of Rupp Arena during the South Carolina vs. Kentucky men's basketball game later that evening.

Started in 1961, the Great Teacher Award is the oldest continuous award that recognizes teaching at UK. The nominations are made by students. Selection of the award recipients is made by the UK Alumni Association Great Teacher Award Committee, in cooperation with the student organization Omicron Delta Kappa. Great Teacher Award recipients each receive a citation, an engraved plaque, and a cash award.

*By Molly Clark, Source UK Now*

see blue.<sup>™</sup>  
in the College of Ag

Wildcat Canter • 3

## Kentucky Equine Survey releases initial findings

Kentucky is home to 242,400 horses and the total value of the state's equine and equine-related assets is estimated at \$23.4 billion, according to the 2012 Kentucky Equine Survey.

The comprehensive statewide survey of all breeds of horses, ponies, donkeys and mules was the first such study since 1977. Conducted between June and October 2012 by the Kentucky field office of the National Agricultural Statistics Service, with support and assistance by the University of Kentucky College of Agriculture and the Kentucky Horse Council, the survey's results identified 35,000 equine operations and 1.1 million acres devoted to equine use. The results are a snapshot of the 2011 calendar year.

"The value of Kentucky's equine and equine-related assets, such as land and buildings, is significantly larger than other states for which we have data, and it serves to underscore that Kentucky is the Horse Capital of the World," said Jill Stowe, UK associate professor in agricultural economics and project lead. "Upcoming economic impact analysis results will provide even more details regarding the importance of the industry to the state's economy."

Phase 1 of the study was a statewide survey of equine operations that included an inventory of all breeds of equine, including horses, ponies, donkeys and mules. It included a look at sales, income, expenses and assets of those operations. County-level results from Phase 1 are expected soon. Phase 2 of the project will entail an economic impact analysis of Kentucky's equine industry. Phase 2 information will be available mid-2013.

With regard to the inventory of Kentucky's equine operations, the study determined that 56 percent are farms or ranches and 30 percent are for personal use, while 3 percent are boarding, training or riding facilities. Breeding operations accounted for 2 percent.

The vast majority of horses inventoried were light horses (216,300), followed by donkeys and mules (14,000), ponies (7,000) and draft horses (5,100). Thoroughbreds are the most prevalent breed in the state (54,000), followed by Quarter Horses (42,000), Tennessee Walking Horses (36,000), American Saddlebreds (14,000), donkeys, mules and burros (14,000), Mountain Horse breeds (12,500) and Standardbreds (9,500).

"The University of Kentucky study objectively and scientifically validates the importance of the horse industry to our state. This may well be the most significant body of work ever undertaken to estimate the economic significance of horses to Kentucky," said Norman K. Luba, executive director of the North American Equine Ranching Information Council. "As horse industry enthusiasts, we are indebted to the University of Kentucky, the Kentucky Agricultural Development Fund and the Kentucky Horse Council."

The primary use of the majority of Kentucky's equines is trail riding/pleasure (79,500), followed by broodmares (38,000), horses currently idle/not working (33,000), competition/show (24,500), horses currently growing, including yearlings, weanlings and foals (23,000), racing (15,000), work/transportation (12,500), breeding stallions (3,900) and other activities (13,000).

"Kentucky's horse industry is important to a diverse set of people across the Commonwealth, from the 9-year-old 4-H member with her pony to the retired school teacher who just took up trail riding," said Anna Zinkhon, Kentucky Horse Council Board president. "It is the Kentucky Horse Council's goal to keep this industry alive and growing. The Kentucky Equine Survey provides us with the numbers, so we'll know how to develop programs to emphasize strengths as well as work on improving areas of need. It is an important window into the future."

According to the study, the estimated value of the 242,400 equines in Kentucky is about \$6.3 billion. In addition, the estimated value of equine-related assets, including land and buildings, vehicles and equipment, feed and supplies and tack and equestrian clothing, is \$17.1 billion, bringing the total value of Kentucky's equine and equine-related assets to \$23.4 billion.

The total of all equine-related sales and income for equine operations in 2011 was about \$1.1 billion. That total came from sales of all equines, estimated to be \$521.1 million, and \$491 million in income from services provided, including both breeding and non-breeding services such as training, lessons, boarding, farrier, transportation, purses, incentives, etc.

*Continued on page 5*

## Continued from page 4

The study found that total equine-related expenditures by equine operations in 2011 totaled about \$1.2 billion. Capital expenditures by equine operations, including the purchase of equines, real estate and improvements and equipment, were estimated to be \$337 million. Operating expenditures, including expenses paid for boarding, feed, bedding, veterinary, supplies, farrier services, breeding, maintenance and repair, insurance premiums, utilities and fuel, taxes, rent and/or lease, fees and payments, shipping and travel, training and other fees, totaled \$839 million. Notably, 77 percent of these operating expenses were spent in Kentucky.

“We are pleased that this Kentucky Agricultural Development Fund investment made by the Kentucky Agricultural Development Board will provide benefits to one of our state’s signature industries,” said Roger Thomas, executive director of the Governor’s Office of Agricultural Policy. “The results of this survey will validate the economic benefits of all breeds of equine to Kentucky’s overall economy.”

“The College of Agriculture is proud of this project because first and foremost, it represents the best available methods of surveying that universities and government can provide. But the most compelling aspect of this study is that our future policy discussions can be guided by solid numbers. We thank the Kentucky Horse Council and the Governor’s Office of Ag Policy as well as our numerous donors, for recognizing how much the Horse Capital of the World needs a sound foundation for policy decisions,” said Nancy Cox, associate dean for research in UK’s College of Agriculture, Kentucky Agricultural Experiment Station director and administrative leader for UK Ag Equine Programs.

Funding for the project was provided by the Kentucky Agricultural Development Fund, along with the University of Kentucky College of Agriculture, the Kentucky Horse Council and numerous other industry organizations and individuals, a complete listing of which can be found on the project’s website.

More information about the 2012 Kentucky Equine Survey can be found on the UK Ag Equine Programs website at <http://www2.ca.uky.edu/equine/kyequinesurvey> or on Kentucky Horse Council’s website at <http://www.kentuckyhorse.org/>. A copy of the complete Phase 1 results, including county-level breakdowns, will also be posted on both of these websites when they become available.

*By Holly Wiemers*

## Kentucky Horse Council Announces Kentucky Round-up

The Kentucky Horse Council is holding the Kentucky Round-Up, a new family event featuring horse fun, learning and interaction, on Feb. 2 at the Kentucky Horse Park’s Alltech Arena. Kentucky Round-Up also includes an evening concert by country music star John Michael Montgomery.

The event has been designed to provide families with no horse involvement to be around horses, learn about their personalities, grooming, safety, and horse sports that kids can be involved with. In addition, those who already ride horses will find advanced speakers, clinicians, vendors and demonstrations for their interest. Also taking place at the Kentucky Round-Up is the 4th Annual International Safety Symposium, sponsored by [riders4helmets.com](http://riders4helmets.com), attracting attendees and speakers from around the world.

In the evening, well-known Kentucky country music artist John Michael Montgomery will be in concert in the arena, with the Danny Frazier Band as the opening act.

Between the daytime activities and the concert, the Kentucky Horse Council will hold its annual Members’ Awards Banquet to recognize outstanding industry contributors and volunteers.

“Kentucky Round-Up is a way for the Horse Council to address an issue which all of agriculture faces,” said Anna Zinkhon, president of the Kentucky Horse Council board. “Less young people today are comfortable around horses and other livestock because the family farms are disappearing. Getting the kids ‘off the couch and into the barn’ not only introduces them to the wonder of horses, but also has tremendous character and health benefits.”

“We also hope to take these same families out to horse activities and farms throughout the year,” said Ginny Grulke, executive director of the Kentucky Horse Council. “This is not just a one-day experience, but a continuing pathway to the horse.”

For more information about Kentucky Round-Up, visit [www.kentuckyroundup.com](http://www.kentuckyroundup.com).

# Clubs and Teams

## UK Equestrian Team

### Hunt Seat competition schedule:

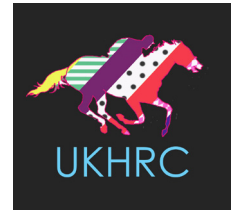
Feb. 2-3, at Midway, cohosted by the University of Cincinnati and Midway  
Feb. 23-24, at Lakeside Arena, hosted by UK

### Western Team competition schedule:

Feb. 2-3, hosted by Midway  
Feb. 9, hosted by Morehead

## Horse Racing Club

On Jan. 26, the Horse Racing Club traveled to Calumet Farm to inspect the stallions.



---

## Hands-on research internship broadens horizons in equine industry

Nicole Holownia, a junior majoring in equine science from the bay area in California, recently completed a four-month internship with Kristine Urschel, a researcher and professor in the Department of Animal and Food Sciences at UK.

During the internship, Holownia worked side-by-side with Urschel's graduate students on a study evaluating protein metabolism in older horses. This internship allowed Holownia to be involved with every aspect of the study. Holownia had the opportunity to gain hands-on experience collecting blood, breath and muscle biopsy samples and also learned about different techniques for analyzing these samples in the lab.



When asked about the value of a research internship, Urschel said, "The most important lesson I want my interns to take away from their experience is a love for research and an appreciation for the complexities of the process."

Urschel's research focuses on protein and amino acid requirements and metabolism in horses of all ages and physiological states. She is determining the factors that regulate muscle protein synthesis and how these factors change during the aging process.

Holownia is currently weighing her options for graduate study programs. Studying equine nutrition in graduate school has always been of interest to her, she said, and this internship has helped her gain insight into what a career in the field of nutrition research in horses entails.

"I learned the most about how to set up the studies and analyze the blood and tissue afterwards," Holownia said.

"Dr. Urschel does a great job of letting students participate in research projects rather than just observe them and Nicole is a very impressive, hard-working student. This internship was a great match of personality and career goals," said Elizabeth LaBonty, Internship Coordinator.

*By Kelli Crosby*

## Congrats December grads!

Congratulations to the following students who graduated in December with a Bachelor of Science in Equine Science and Management.

- Emily Ashton
- Claire Burns
- Ellen Caldwell
- Shalise Gallaher
- Hallie Hardy
- Sarah Ison
- Emily Moscoe
- Hannah Niebielski
- Ethan Roetman
- Meghan Shader



## UK Wins 12 CASE Kentucky Awards; Ag's Marci Hicks Honored

The University of Kentucky received a total of 12 awards for outstanding work in institutional advancement, alumni relations and communications in the annual competition sponsored by the Council for Advancement and Support of Education (CASE) Kentucky. Awards were presented at the organization's conference held in Louisville Dec. 7.

Marci Hicks, director of development for the UK College of Agriculture, also was honored at the CASE conference. She received the Beth K. Fields Award, which was established by the CASE Kentucky Board of Directors in 1994 in memory of Beth Fields, who served as director of unit associations for the University of Louisville Alumni Association.

She was an active CASE Kentucky Board member and admired advancement professional. The award is designed to recognize someone who continually goes over and above the call of duty in the advancement profession, and recipients must have served the advancement field for at least 10 years.

CASE Kentucky is a statewide organization that serves advancement professionals in alumni relations, advancement services, development and communications at more than 70 colleges, universities, private secondary and elementary schools and other educational organizations. CASE Kentucky is also part of CASE District III (which includes educational institutions in the southeastern portion of the United States) and the national CASE organization.

<http://uknow.uky.edu/content/uk-wins-12-case-kentucky-awards-ags-marci-hicks-honored>

*By G. Wayne Rogers, source UK Now*

**Check out the January issue of the Bluegrass Equine Digest at  
[www2.ca.uky.edu/equine/bed](http://www2.ca.uky.edu/equine/bed)**



## David Switzer inducted into the UK College of Agriculture inaugural Hall of Distinguished Alumni

Five distinguished graduates of the University of Kentucky College of Agriculture were inducted Dec. 14 into the inaugural class of the Hall of Distinguished Alumni.

The inductees were Louis J. Boyd, Maurice Cook, David Switzer, Harold Workman and Joe Wright. These honorees have had outstanding careers and continue to serve as important members of their fields and in their communities.



*Hall of Distinguished Alumni inductees (L to R) Joe Wright, David Switzer, Louis Boyd, Harold Workman and Maurice Cook. Photos by Steve Patton, UK agricultural communications specialist*

For nearly 150 years, extraordinary alumni from College of Agriculture have contributed substantially to their chosen fields, their communities and society. To pay homage to these and future distinguished graduates, the college initiated the Hall of Distinguished Alumni. This award is the highest honor the college will bestow. The college's alumni association spearheaded the formation of this award.

“The Ag and HES Alumni Association is excited to support the establishment of the College of Agriculture Hall of Distinguished Alumni,” said Bill McCloskey, alumni association president. “It is important to recognize and celebrate our alumni that exemplified themselves by making significant contributions to their communities and profession while at the same time proudly representing the University of Kentucky College of Agriculture.”

Switzer of Lexington is recognized worldwide for his extensive knowledge, experience and accomplishments relating to the horse breeding and racing industries. In addition, he is an acknowledged expert in the field of equine foundation bloodstock and insurance, having owned and operated a bloodstock agency for many years. He promotes the Kentucky Thoroughbred industries locally, nationally and internationally. He played a vital communications role during the Mare Reproductive Loss Syndrome crisis in 2001-2002 and led efforts to create an emergency response team from state government and the industry should another such event occur.

“This recognition is a symbol of the respect and admiration we have for distinguished alumni and serves to encourage exemplary achievements by fellow alumni and current students,” said Scott Smith, dean of the College of Agriculture. “These alumni have been outstanding leaders in their professions and in society, and it is our honor to acknowledge those contributions.”

The College of Agriculture Office for Advancement along with the Ag and HES Alumni Association administers the program.

Source: Edited news release by Laura Skillman, Agricultural Communications Services Director in UK's College of Agriculture. Full story can be found at <http://news.ca.uky.edu/article/uk-college-agriculture-inducts-inaugural-hall-distinguished-alumni>.

## UK's Neil and Deborah Williams Honored by MSU

The Mississippi State University Alumni Association recently honored its 2012 class of Alumni Fellows, including the University of Kentucky's Neil and Deborah Williams.

Sponsored by the MSU Alumni Association, the colleges, the Meridian campus and the Office of the Provost, the fellows program recognizes alumni who have distinguished themselves in their respective careers.

MSU's College of Veterinary Medicine bestowed the honor of fellow to the husband and wife team, Neil M. Williams and Deborah Maples Williams. Both employees of the University of Kentucky, Neil serves as a professor and associate director of the Veterinary Diagnostic Lab, while Deborah is the diagnostic services coordinator. The couple resides in Nicholasville.

<http://uknow.uky.edu/content/uks-neil-and-deborah-williams-honored-msu>



# Career Fair Tips

Source: James W. Stuckert Career Center

## 1. Research

Take the time to research which employers will be attending the James W. Stuckert Career Center Fall 2012 Employer Showcase by going to our website, [www.uky.edu/careercenter](http://www.uky.edu/careercenter). The attending employers are listed on Wildcat CareerLink. If you do not have a Wildcat CareerLink account it is easy to get one by scrolling to the bottom of our first website page and clicking Student/Alumni button.

## 2. Resume

Have at least 25 copies of your best resume, on high-quality white or ivory resume paper, prepared to hand to representatives at the Showcase. Carry your resume in a leather portfolio or folder with a nice pen and a pad of paper.

## 3. Dress professionally to make a positive first impression!

Women's Attire:

- A business suit in a dark color with a modest blouse or a modest skirt, blouse and a jacket or blazer.
- Low heeled, polished dress shoes. Hosiery.
- Hair should be neat and away from your face.
- Make-up and jewelry should be at a minimum.

Men's Attire:

- A business suit in a darker color.
- A dress shirt and tie.
- Dress socks and shoes with a matching belt.
- Or a dress shirt and tie with nice slacks and a sport coat.



JAMES W. STUCKERT  
**CAREER CENTER**  
University of Kentucky

## 4. Introduction

You have only 3 seconds to make a first impression! So you want to present yourself as confident, pleasant, and relaxed.

- A smile will help you relax and let the employer know you are friendly. (Employers get nervous too!)
- Eye contact lets the employer know that you are listening and engaged in the conversation.
- A firm handshake speaks volumes about your personality.
- Practice introducing yourself OUTLOUD so you are used to hearing it when you speak to an employer: Your name, grade level and major are a good start.

## 5. Market Yourself Well

Be prepared to respond to: "Tell me a little bit about you."

Develop a 30-second commercial which is a quick synopsis of:

- Your major and education level
- Why you chose your major
- What you like best about your chosen field
- What you do best in regard to your major
- Strengths and passions

## 6. Be Prepared With Questions

What to ask? Do your research of companies as suggested in Tip #1 and be prepared to ask the company about themselves.

Examples of questions might be:

- Current and future projects
- Company Goals
- Company Success

What not to ask! What does your company do? (This can offend the employer and shows that you are not specifically interested in them). How much do you pay? What are your benefits?

## 7. Be a good listener.

- Again, eye contact shows that you are listening.
- Take notes. This also shows you are listening and will help you with details later.
- Body language: Keep your weight evenly distributed on both feet and your back straight.
- It is important to acquire the contact information of the employers you meet at any career fair.
- If they don't have their cards with them, write their information down on your pad of paper.

Continued on page 10

*Continued from page 9*

### 9. Follow-up

Be sure to send a handwritten Thank-you note to those employers you met and with whom you hope to get an interview. Emails often don't get read or get deleted. A hard-copy, handwritten note tells the employer that you took the time to follow good business protocol and that you really want to work for them.

### 10. Relax and Have Fun!

A career fair is a wonderful opportunity to:

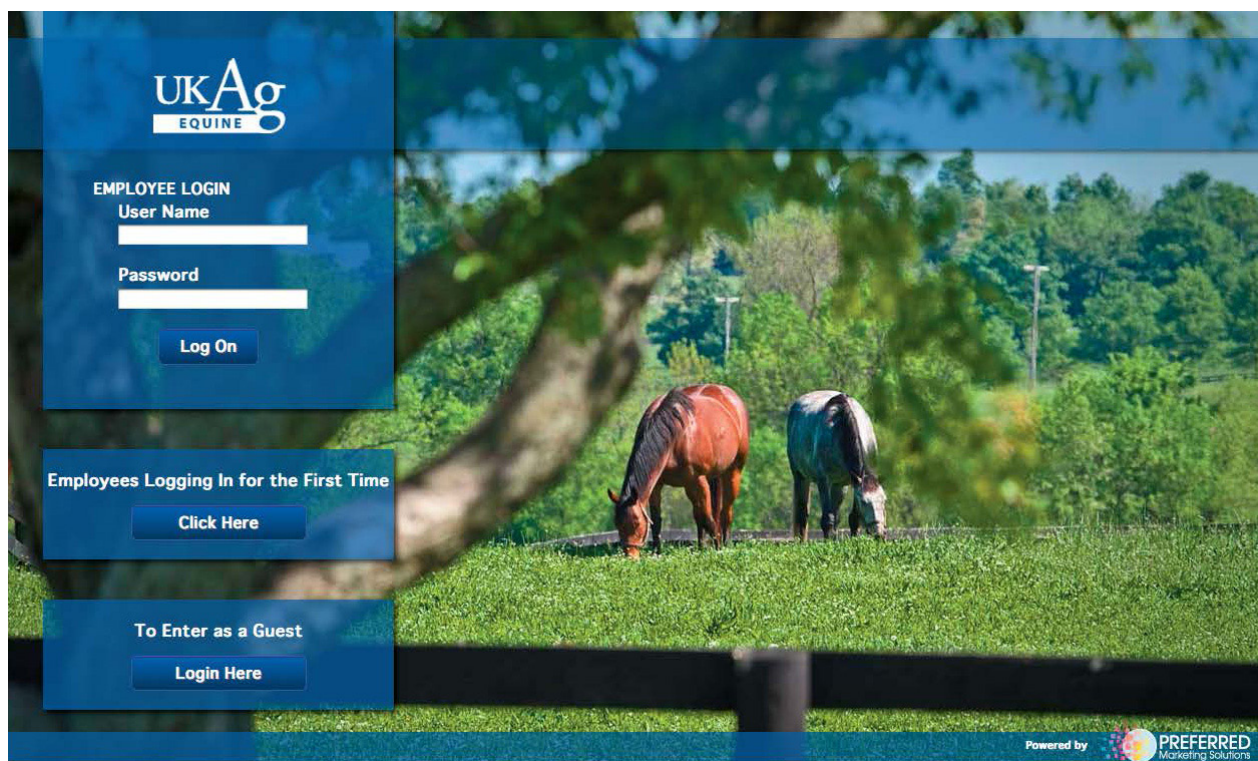
- Practice your interviewing skills
- Increase your network of employers
- Learn what companies are hiring UK graduates
- Meet lots of people who want you to succeed

So have fun and jump right in!

---

## UK Ag Equine Programs launches online store

In response to requests for merchandise featuring UK equine logos, UK Ag Equine Programs has launched an online store. Find UK Ag Equine or Gluck Equine Research Center logoed items from t-shirts to coats to tailgating gear all in one spot. Visit [www.UKAgEquineStore.com](http://www.UKAgEquineStore.com) with your PC, tablet or smartphone and login as a guest.



# PASTURES PLEASE !!

## PASTURE MANAGEMENT FOR THE HORSE OWNER

Please contact your county extension agent to reserve a spot at the meeting.

The 2013 Pastures Please meeting is sponsored by the UK Cooperative Extension Service and the UK Ag Equine Programs.

PASTURES PLEASE!!  
PLANNING  
COMMITTEE:

KIMBERLY POE  
ROB AMBURGEY  
ADAM PROBST  
WAYNE LONG  
MICHELLE SIMON  
DAVID DAVIS  
NICK CARTER  
DR. BOB COLEMAN  
DR. BILL WITT  
DR. RAY SMITH

The Cooperative Extension Service of Jessamine, Woodford, Clark, Jefferson, Scott, Fayette and Bourbon Counties invite you to attend an informative meeting on the management of horse pastures. Through this program, we try to present some of the latest information geared specifically toward the horse owner/manager. We have some of the top experts in the area lined up for this meeting.



**February 18, 2013 - 6:00 p.m.**  
**Fayette County Extension Office**  
**1140 Red Mile Place**  
**Lexington, KY 40504**

**6:00pm - Appetizers & Refreshments**  
Sponsored by UK Ag Equine Programs

**6:30pm - Program Begins**  
**Dr. Laurie Lawrence**  
Minimizing the Risk of Laminitis in  
Grazing Horses

**Dr. J.D. Green**  
Weed Management after the 2012 Drought

**Dr. Ray Smith**  
Proven Methods to Reestablish Horse Pastures

### Roundtable Discussion

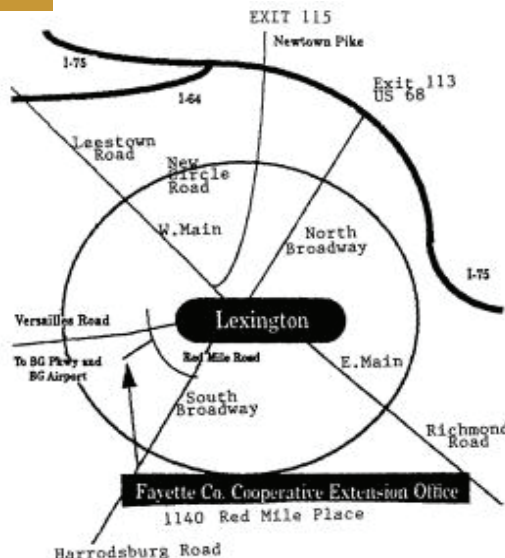
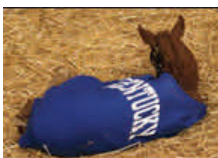
**FOR MORE INFORMATION:  
CONTACT YOUR LOCAL  
COUNTY EXTENSION AGENT**

### COUNTY OFFICE NUMBERS

ROB AMBURGEY	JESSAMINE	(859) 885-4811
KIMBERLY POE	BOURBON	(859) 987-1895
ADAM PROBST	WOODFORD	(859) 873-4601
WAYNE LONG	JEFFERSON	(502) 569-2344
MICHELLE SIMON	SCOTT	(502) 863-0984
DAVID DAVIS	CLARK	(859) 744-4682
NICK CARTER	FAYETTE	(859) 257-5582

COOPERATIVE  
EXTENSION  
SERVICE

**UK**  
UNIVERSITY OF  
KENTUCKY  
College of Agriculture



UKAg  
EXTENSION



UKAg  
SHES



Educational programs of Kentucky Cooperative Extension serve all people regardless of race, color, age, sex, religion, disability, or national origin. University of Kentucky, Kentucky State University, U.S. Department of Agriculture, and Kentucky Counties, Cooperating. Disabilities accommodated with prior notification.

## Equine Club Directory

### Dressage & Eventing Team

Advisor: Dr. Jill Stowe, [jill.stowe@uky.edu](mailto:jill.stowe@uky.edu)  
President: Jen Brogie, [jen.brogie@uky.edu](mailto:jen.brogie@uky.edu)

### Equestrian Team

Advisor: Dr. Bob Coleman, [rcoleman@uky.edu](mailto:rcoleman@uky.edu)  
Hunt Seat President: Samantha Smith,  
[smsm224@g.uky.edu](mailto:smsm224@g.uky.edu)  
Western President: Allie Board,  
[allison.board@uky.edu](mailto:allison.board@uky.edu)

### Horse Racing Club

Advisor: Dr. Laurie Lawrence,  
[laurie.lawrence@uky.edu](mailto:laurie.lawrence@uky.edu)  
President: Audrey Boslego, [aabo224@g.uky.edu](mailto:aabo224@g.uky.edu)

### Polo Club

Advisor: Dr. Roger Brown, [rogerbrown@uky.edu](mailto:rogerbrown@uky.edu)  
President: Posey Obrecht, [poseyobrecht@aol.com](mailto:poseyobrecht@aol.com)

### Research in Equine and Agricultural Disciplines (READ) Club

Advisor: Dr. Kristine Urschel, [klur222@uky.edu](mailto:klur222@uky.edu)  
President: Rose Digianantonio, [rndi223@g.uky.edu](mailto:rndi223@g.uky.edu)

### Saddle Seat Team

Advisor: Dr. Mary Rossano, [mary.rossano@uky.edu](mailto:mary.rossano@uky.edu)  
President: Nicole Laroussa, [nlaroussa@gmail.com](mailto:nlaroussa@gmail.com)

## Contact Us

UK Ag Equine Programs  
N212 Ag Sciences Building North,  
Lexington, KY 40546-0091

Office: (859) 257-2226; Fax: (859) 323-8484  
[equine@uky.edu](mailto:equine@uky.edu); [www.ca.uky.edu/equine](http://www.ca.uky.edu/equine)

Director of the UK Ag Equine Programs & Dickson  
Professor of Equine Science and Management:  
Dr. Ed Squires

Associate Director for Undergraduate Education in  
Equine Science & Management: Dr. Bob  
Coleman

UK Ag Equine Programs Communications  
Director: Holly Wiemers

Equine Lecturer and Internship Coordinator:  
Elizabeth LaBonty

Equine Academic Program Coordinator:  
Kristen Wilson

UK Ag Equine Programs Operations and  
Communications Coordinator: Alexandra Harper

UK Ag Equine Programs Communication Interns:  
Kelli Crosby and Erin Morgan



see blue.<sup>™</sup>  
*in the College of Ag*



# Career Assessment Workshop Series

Career Assessment Workshops introduce students to one of the steps involved in making important life decisions; self-assessment. The Strong Interest Inventory (SII) can help to identify preferred majors, motivating work environments, and potential careers.

Before attending this workshop, students will need to stop by our drop-in hours at the Stuckert Career Center and chat with a Career Advisor and RSVP for a workshop. Students will receive the assessment instructions at that time and may complete the SII online prior to the workshop date.

*Please visit during our drop-in hours  
Monday-Thursday 11am-3pm or call the Stuckert Career  
Center at 257-2746 for more information.*

\*Please be advised that career decision-making is a process; the SII is a tool that can assist you in the career decision-making process.

**All workshops will be held on  
Thursdays  
3:30-4:20pm  
in the Conference Room  
at the Stuckert Career Center  
(Across from the Singletary Center)**

## Spring 2013 Workshop Dates

**January 31**

**February 7**

**February 21**

**February 28**

**March 7**

**March 21**

**March 28**

**April 4**

**April 11**

**April 18**

**April 25**

**Visit Drop-In Hours  
Monday-Thursday  
11am-3pm to RSVP.**